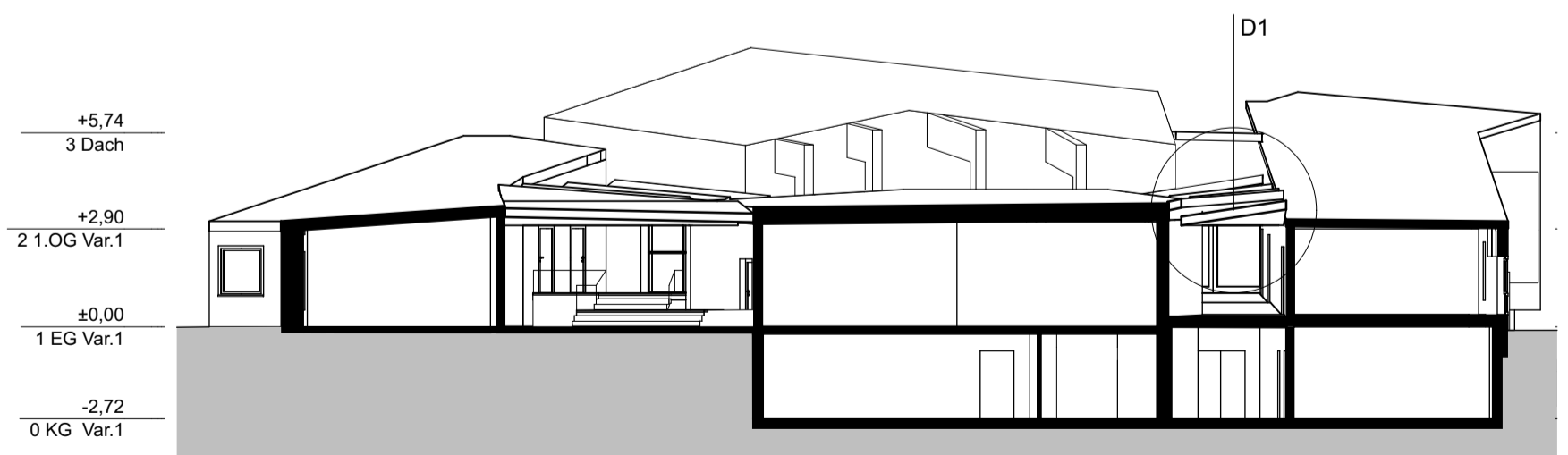


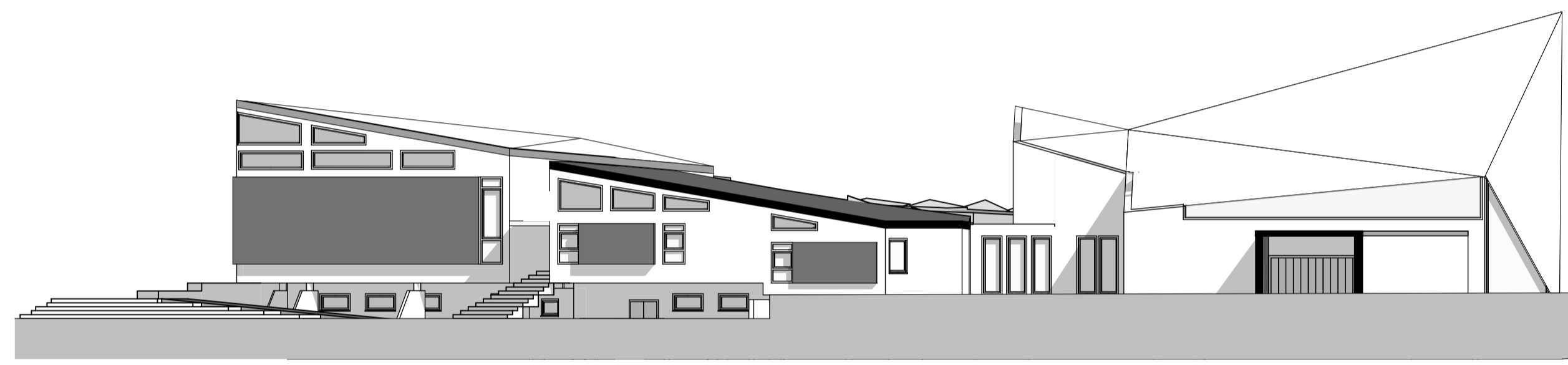
Schnitte durch das Kirchenschiff 1:200



Schnitte durch Stadtteilzentrum 1:200



Nordansicht 1:200



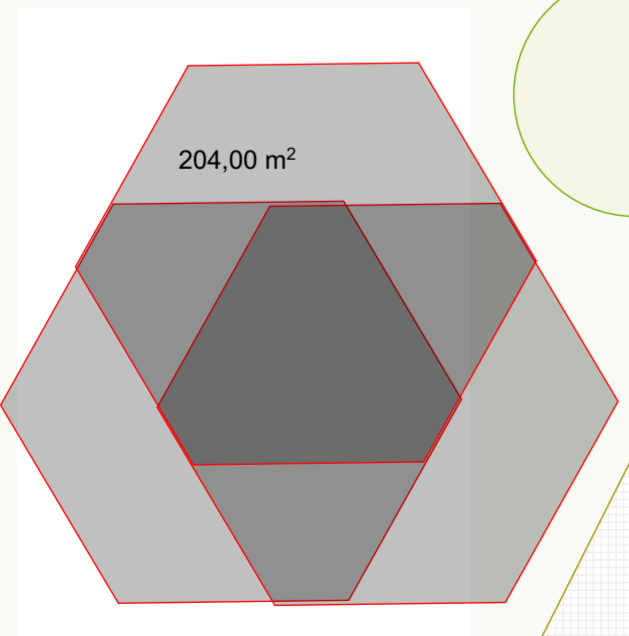
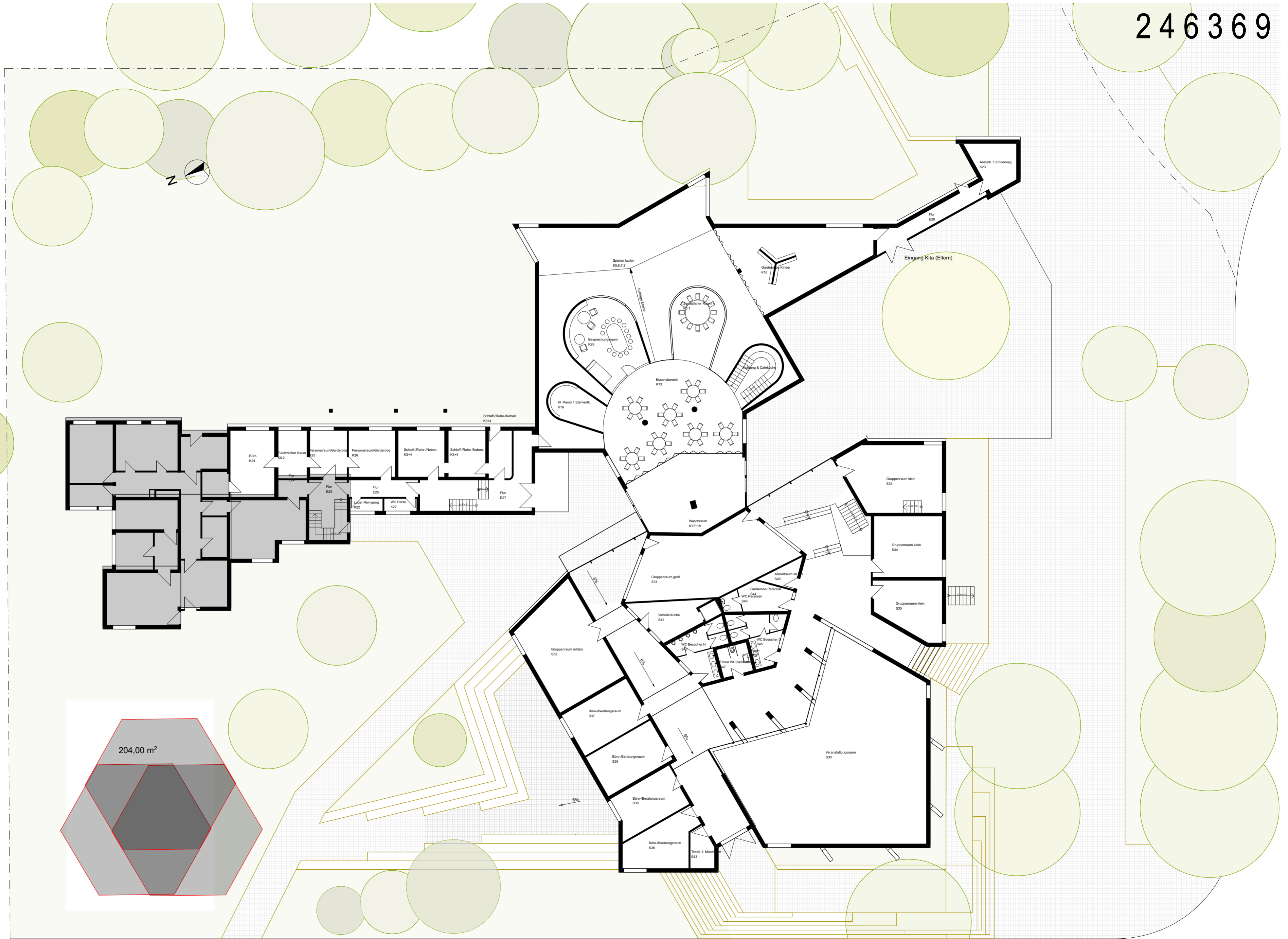
Südansicht 1:200

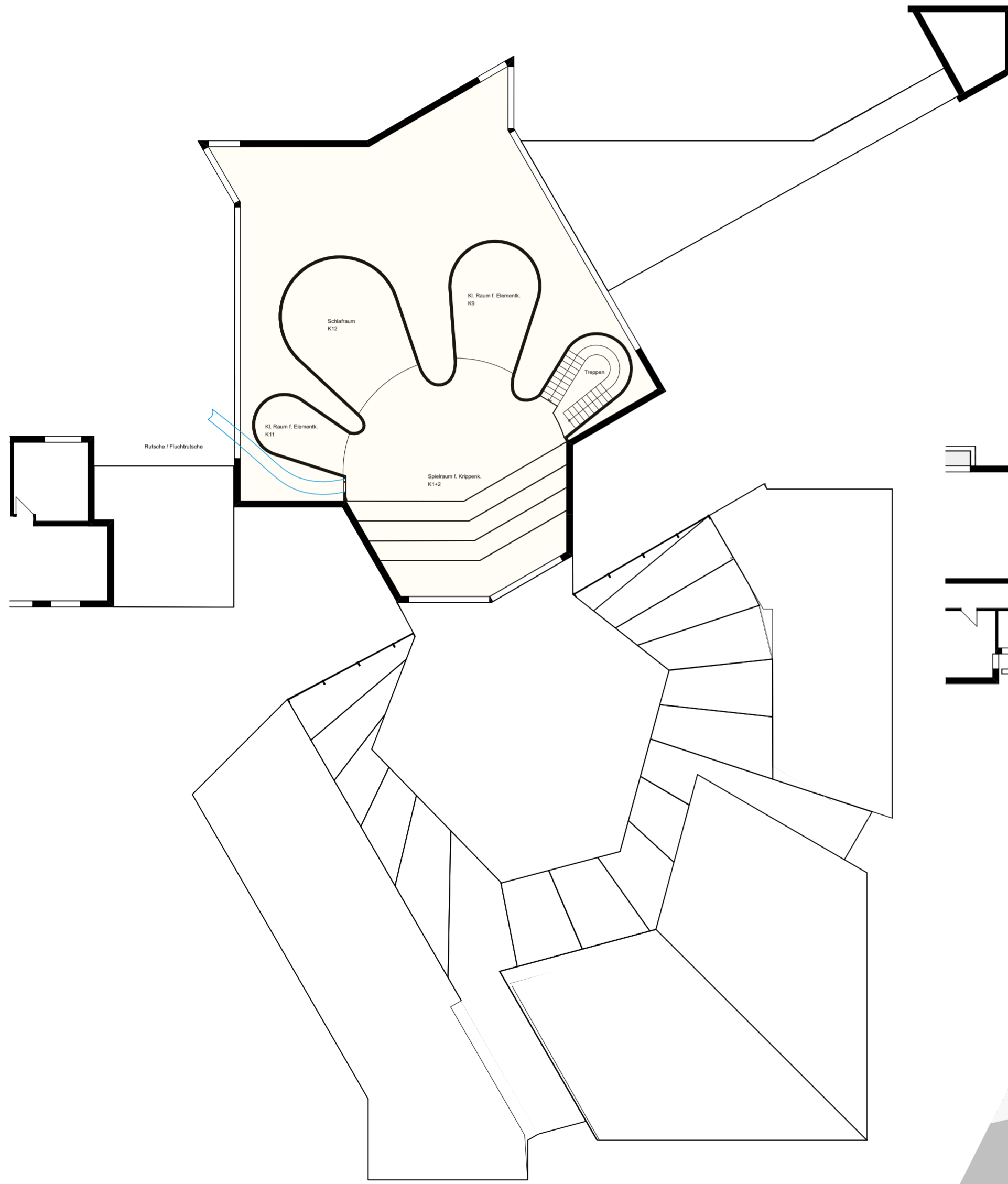


Westansicht 1:200

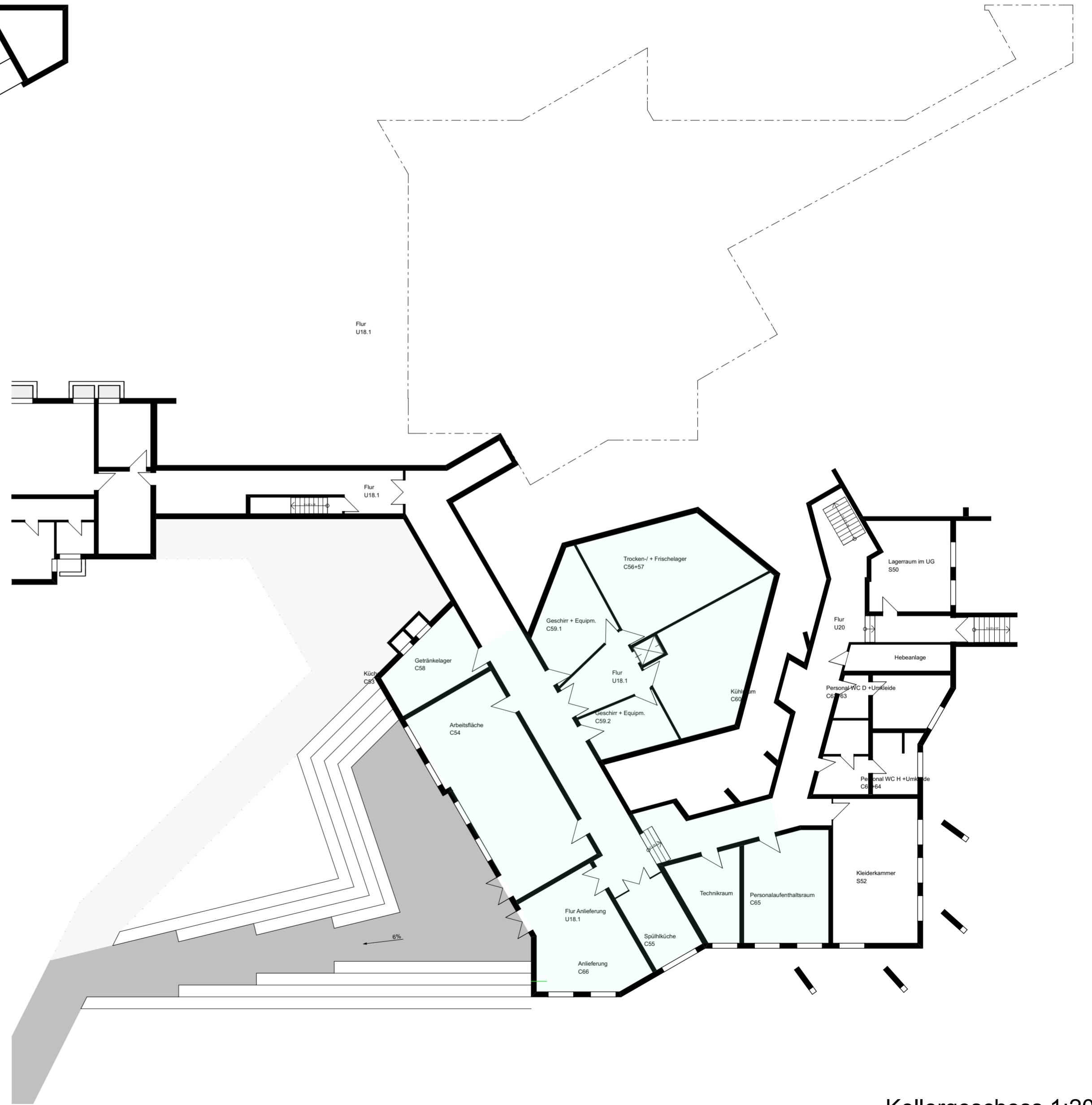


Ansicht neuer Gebäudezugang





Obergeschoss 1:200



Kellergeschoss 1:200

246369



Lageplan 1:500