

Numrich Albrecht Klumpp

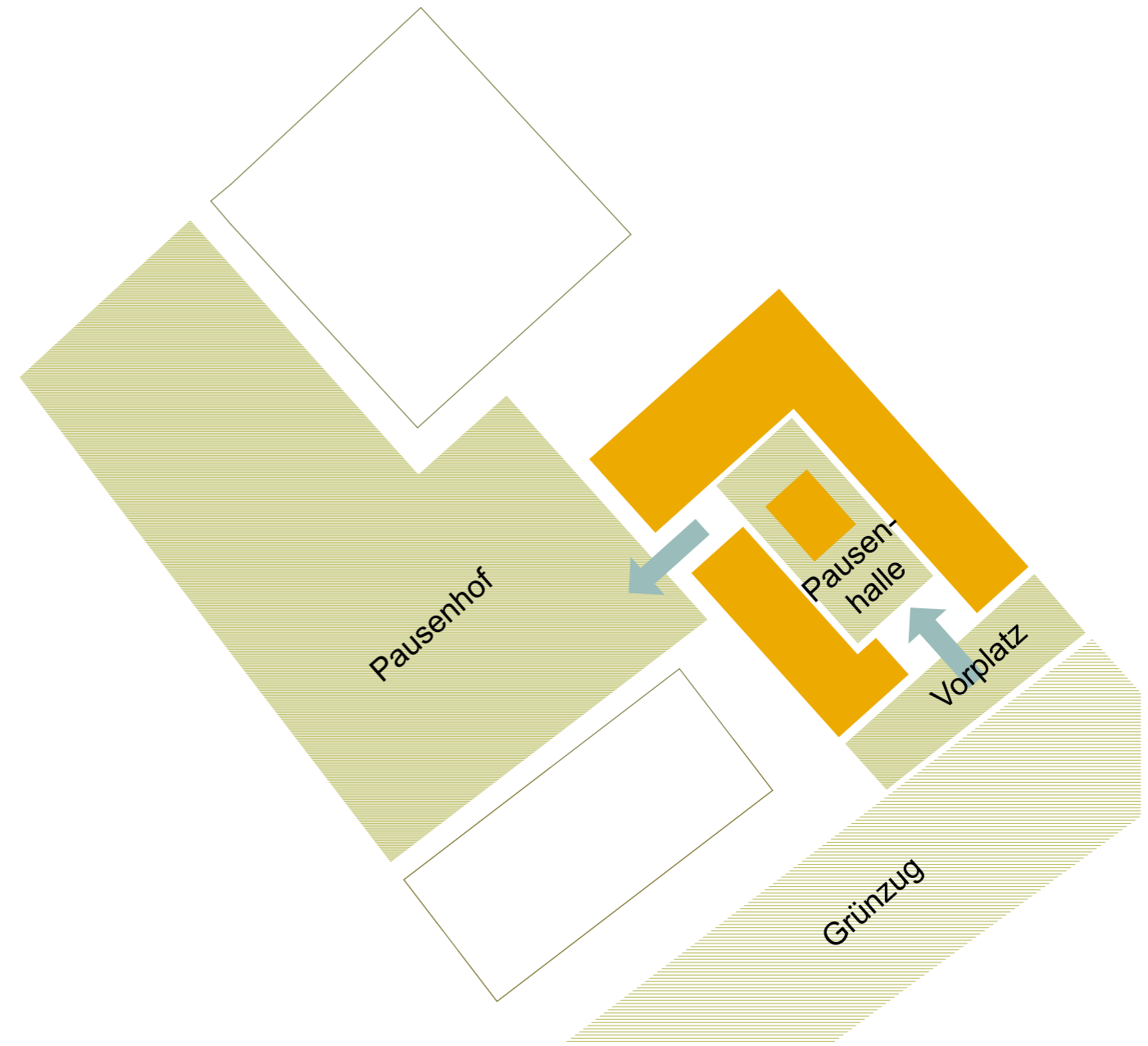
Grundschule
Europacity Mitte



Entwurfsidee

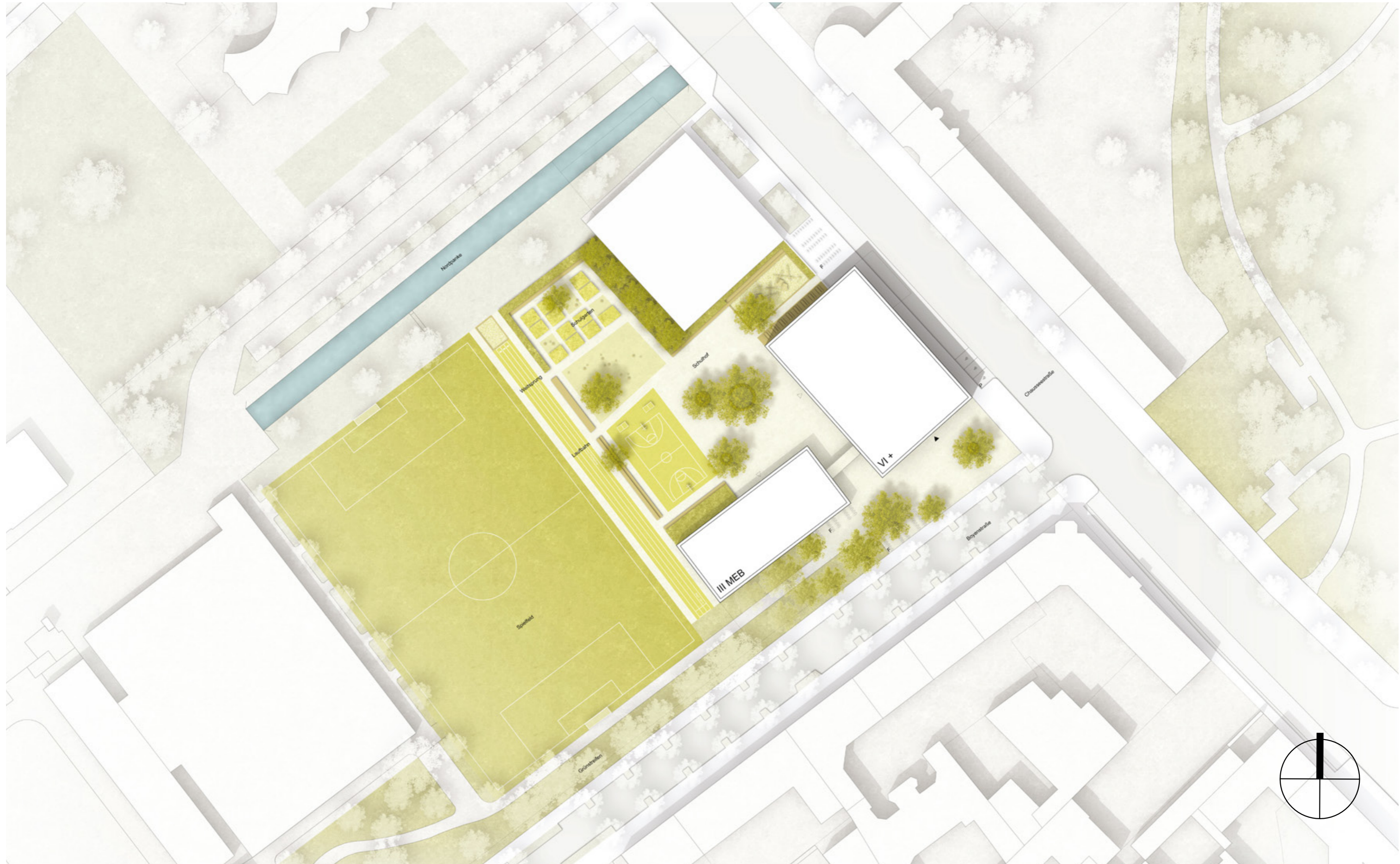


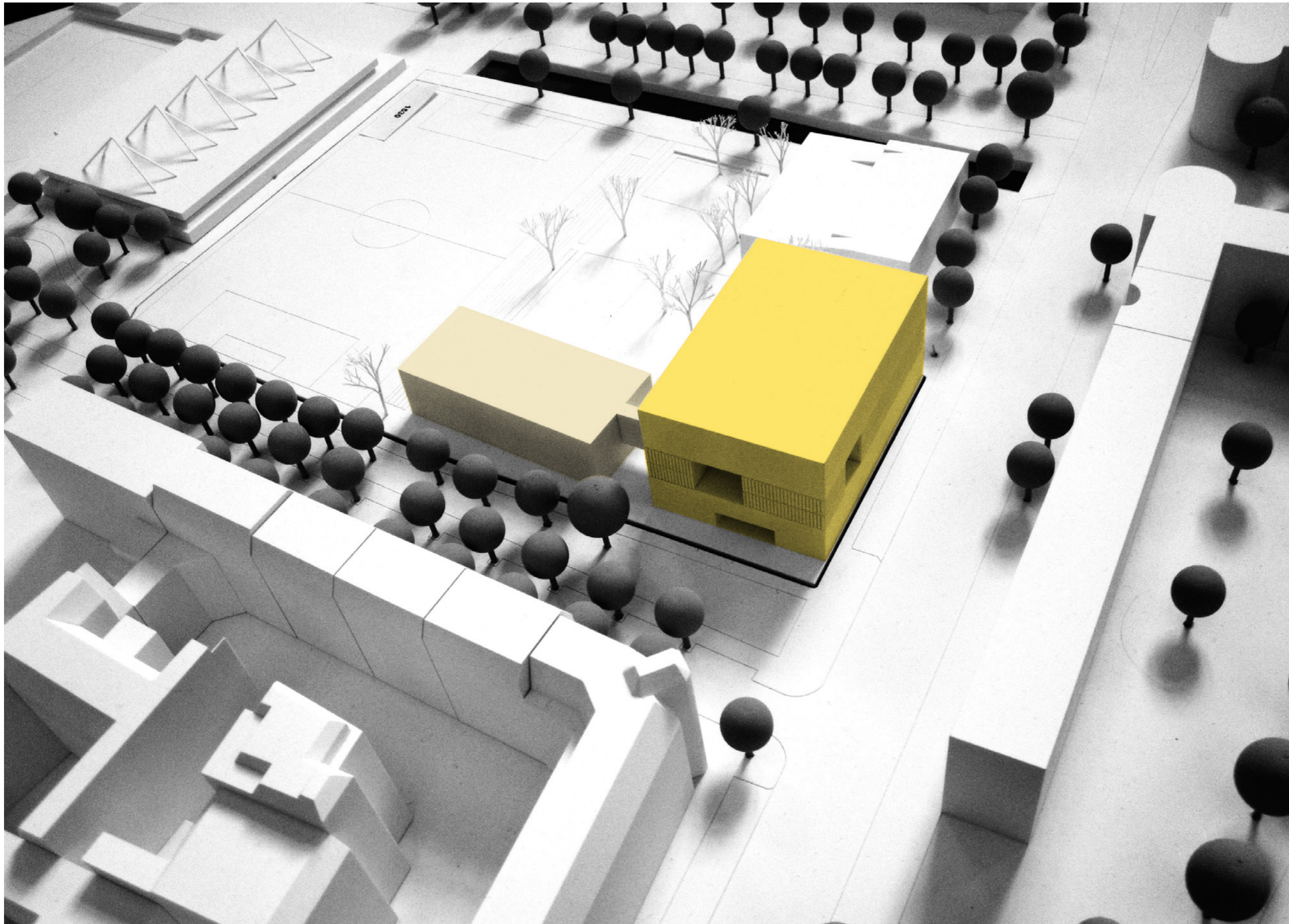
Anbindung an die Europacity



Zugangskonzept - Freiraum

Lageplan



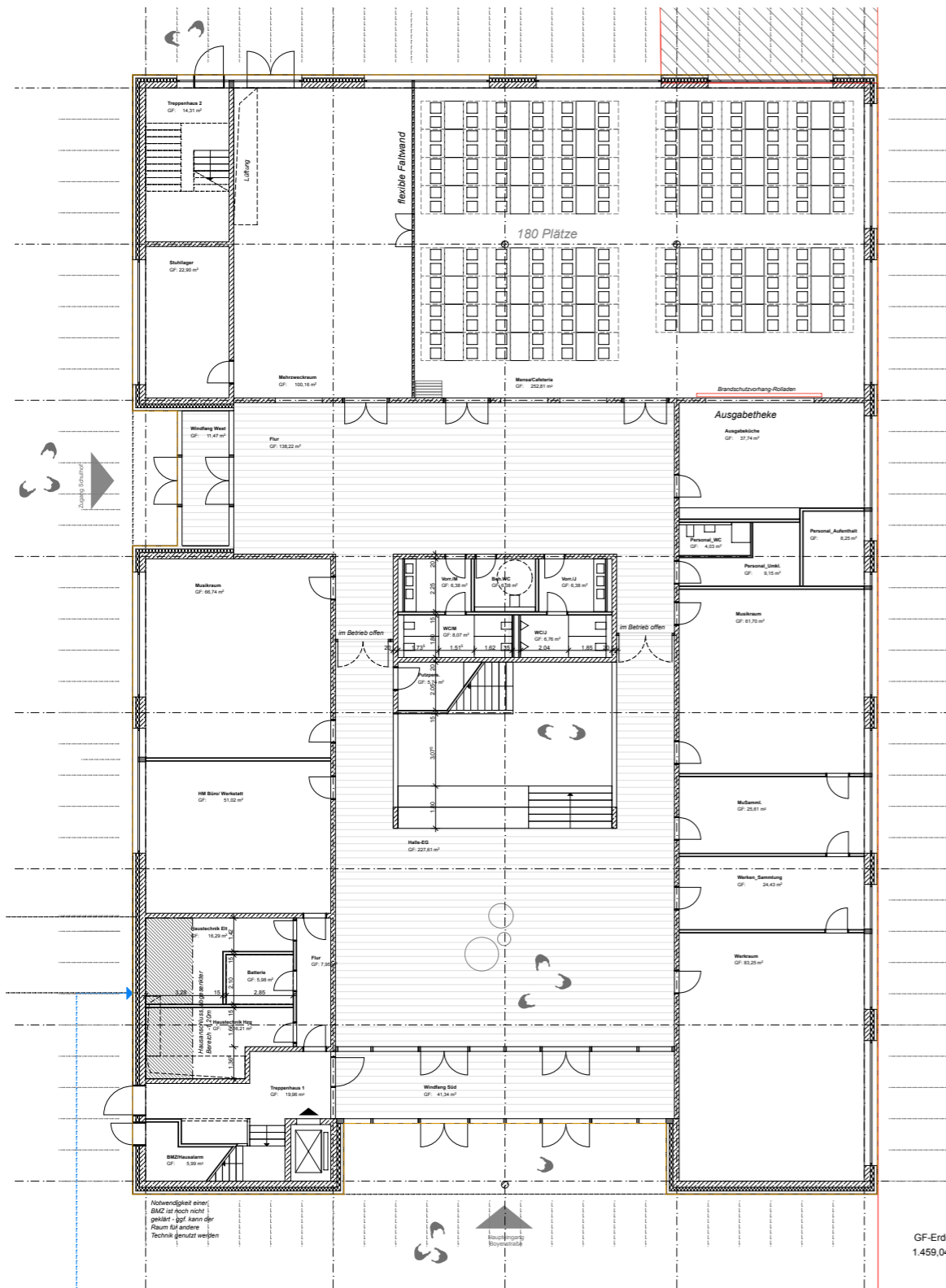


Visualisierung Eingang

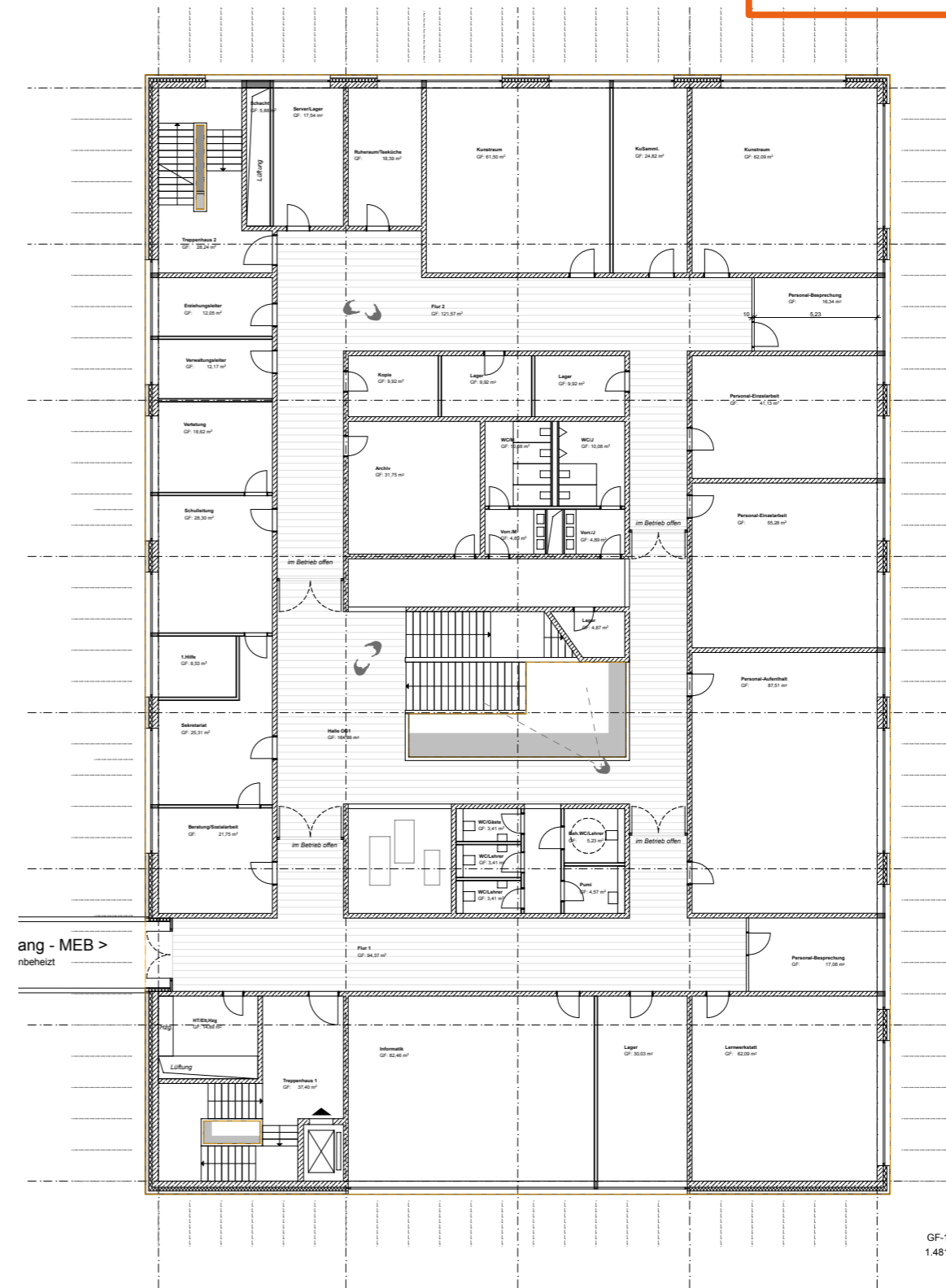


Grundrisse

Erdgeschoss



1. Obergeschoss



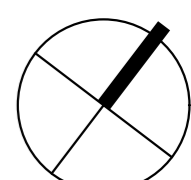
Sporthalle

Klasse

Klasse

Verwaltung / Lehrer / Fachklassen

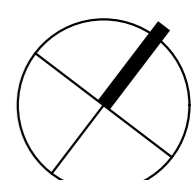
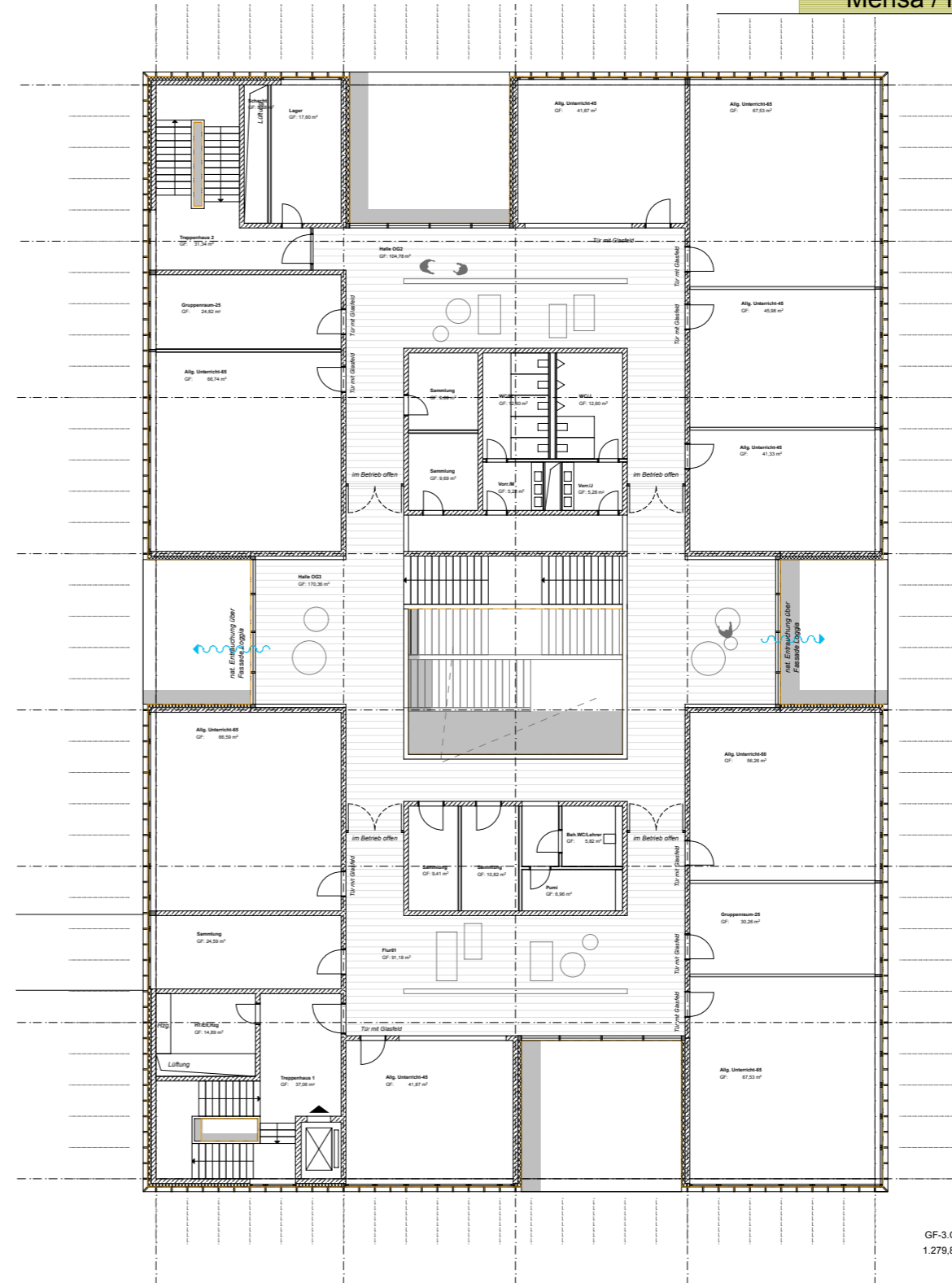
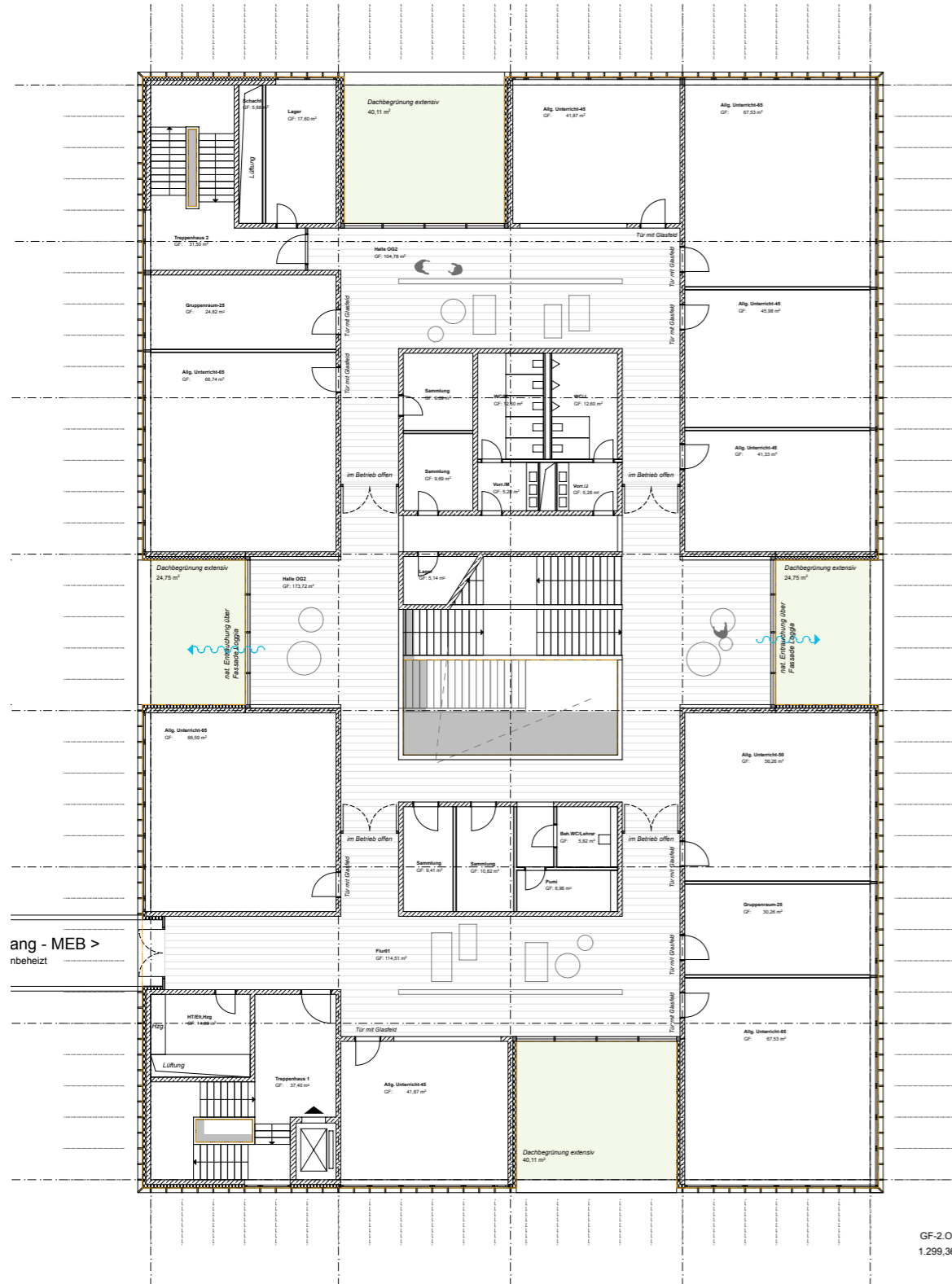
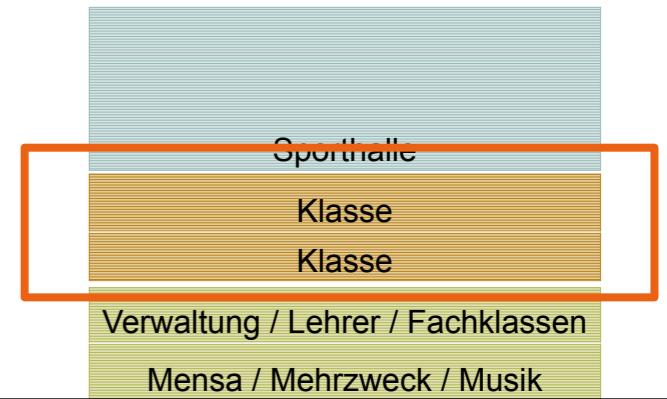
Mensa / Mehrzweck / Musik



Grundrisse

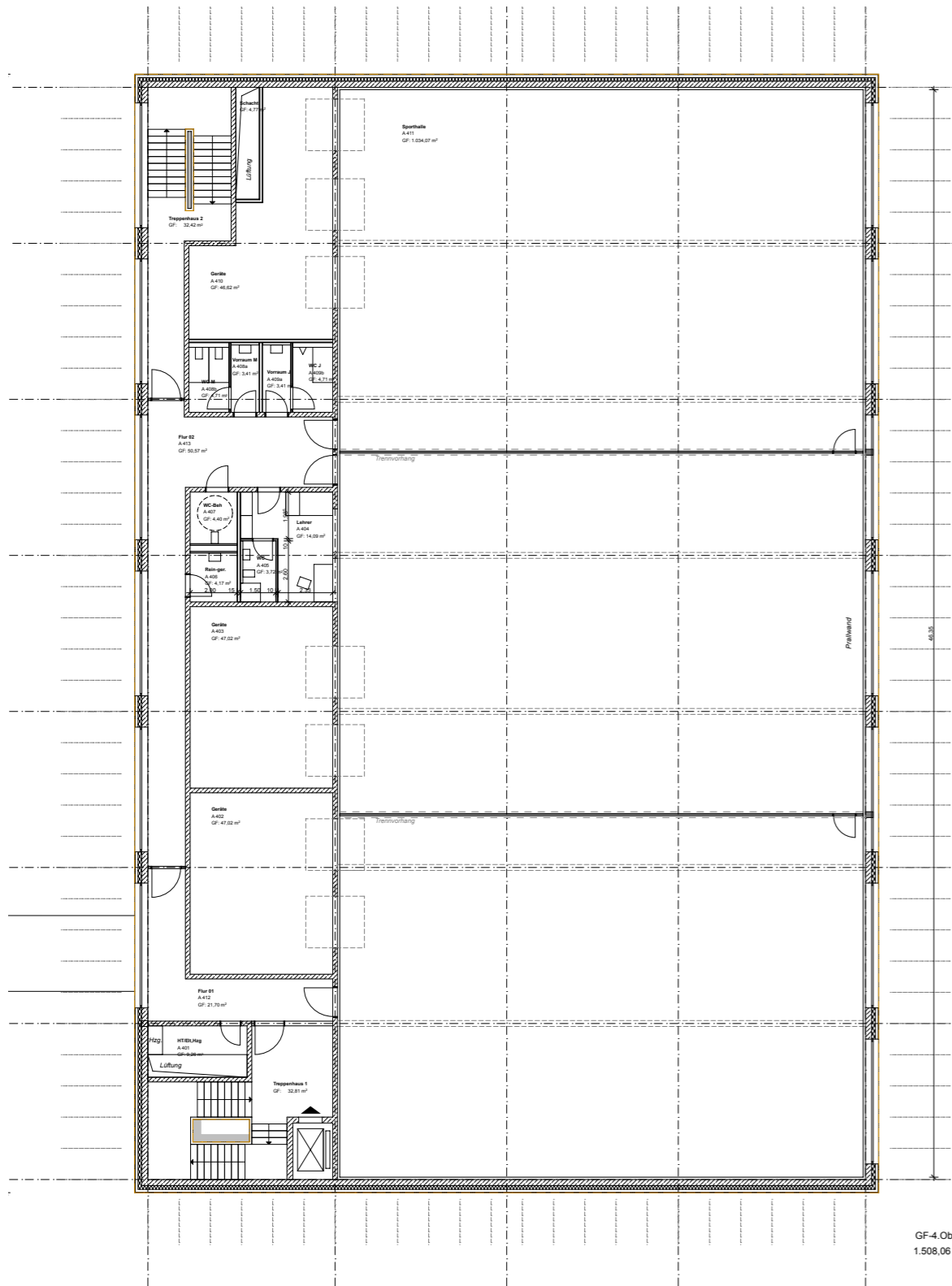
2. Obgergeschoss

3. Obergeschoss



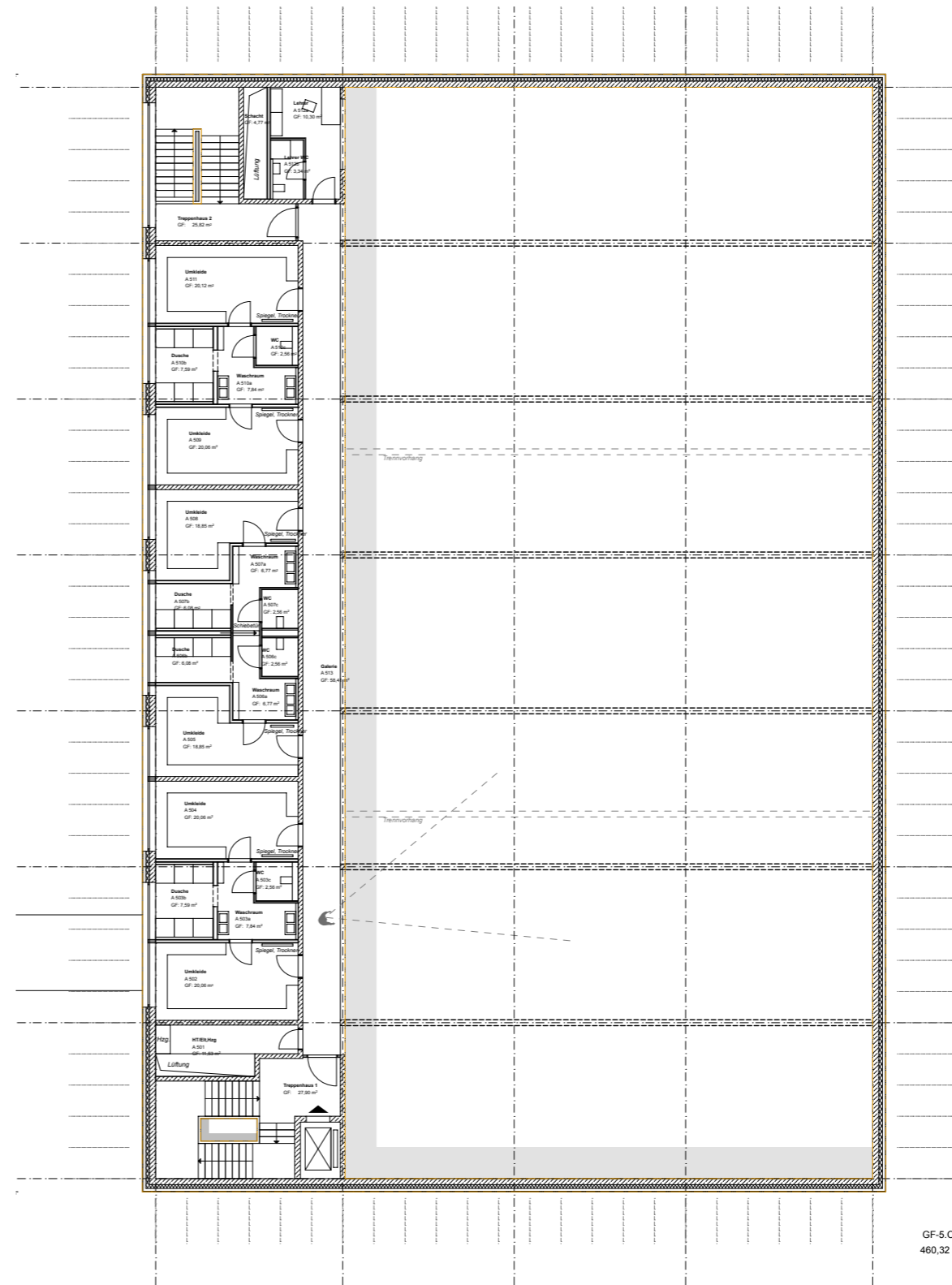
Grundrisse

4. Obgergeschoss

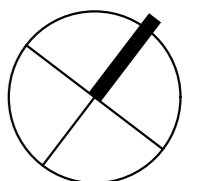
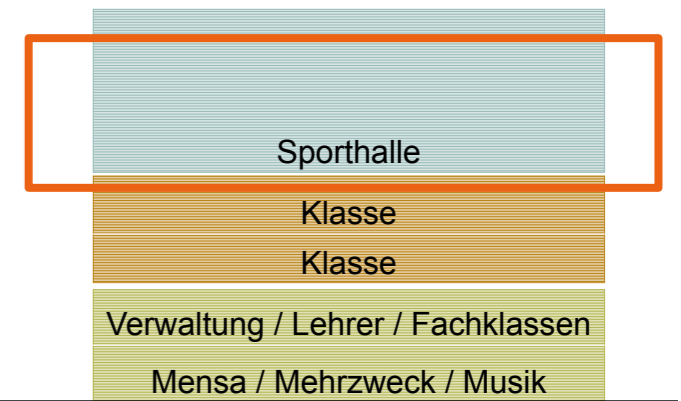


GF-4.Obr
1.508,06 m²

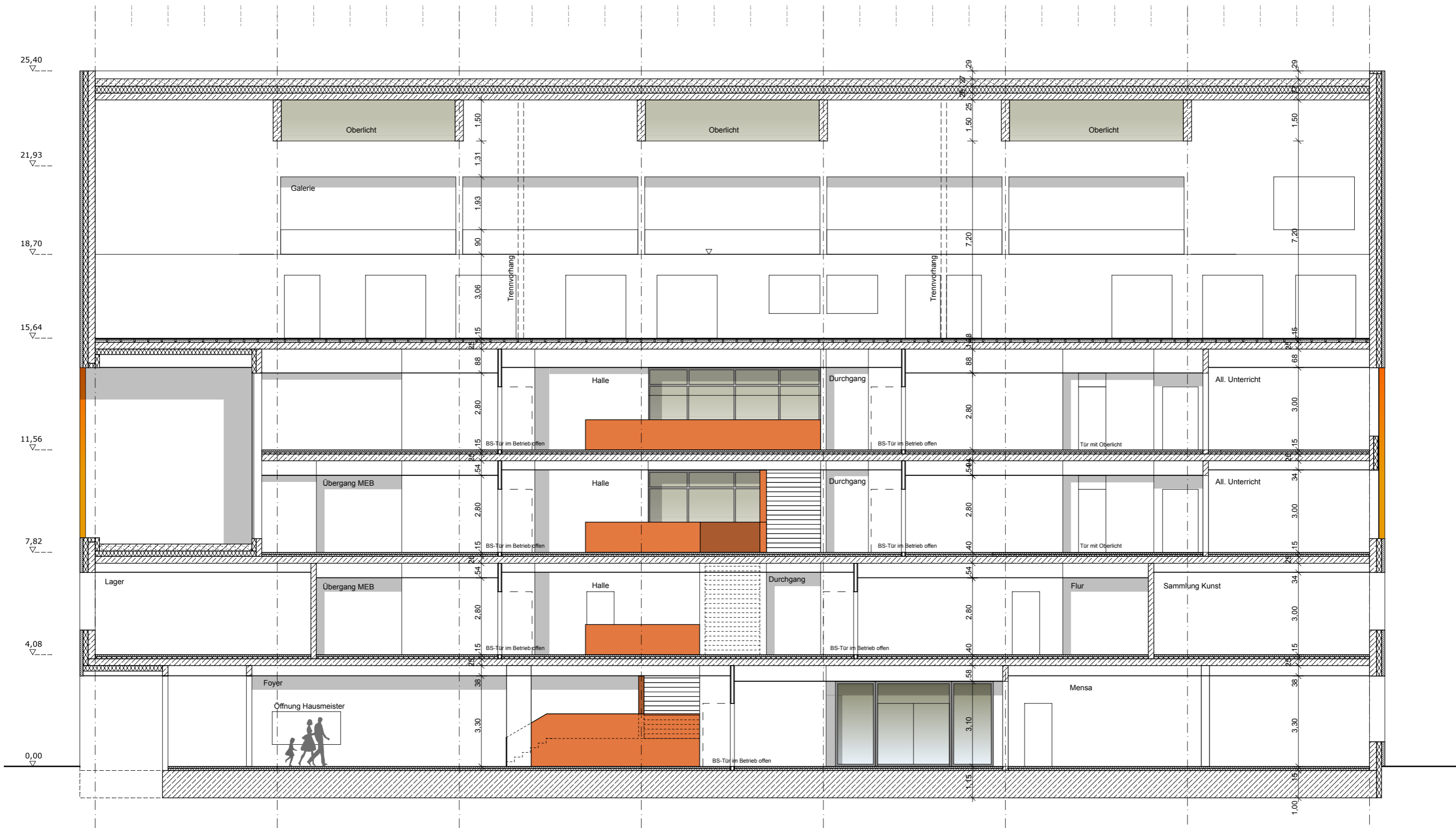
5. Obergeschoss



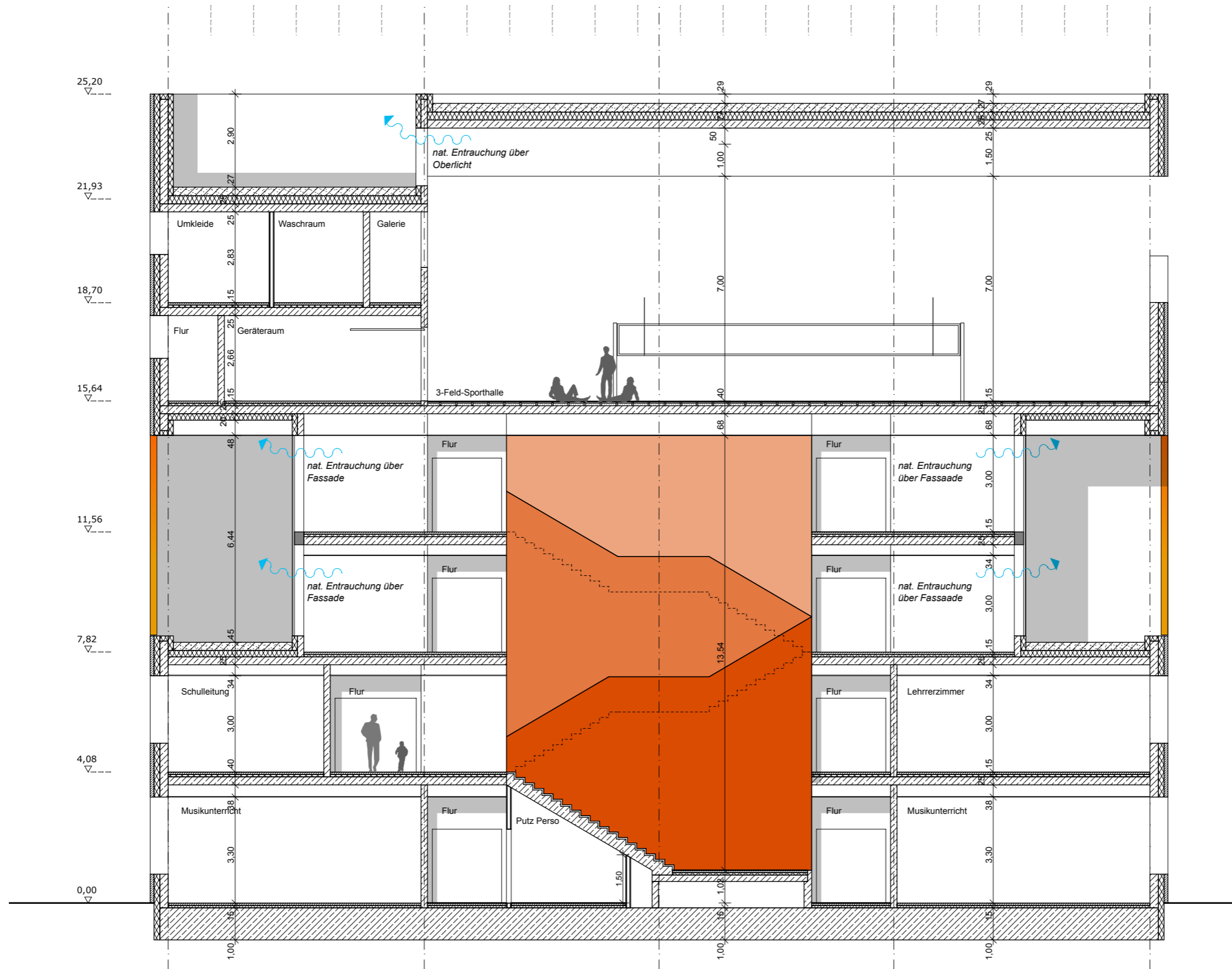
GF-5.Obr
460,32 m²



Schnitt - Längs, o.M.



Schnitt - quer, o.M.



Ansicht Boyenstraße

ANSICHT SÜD



ANSICHT OST



Ansicht Chausseestraße

Visualisierung Schulhof



Terminplan

