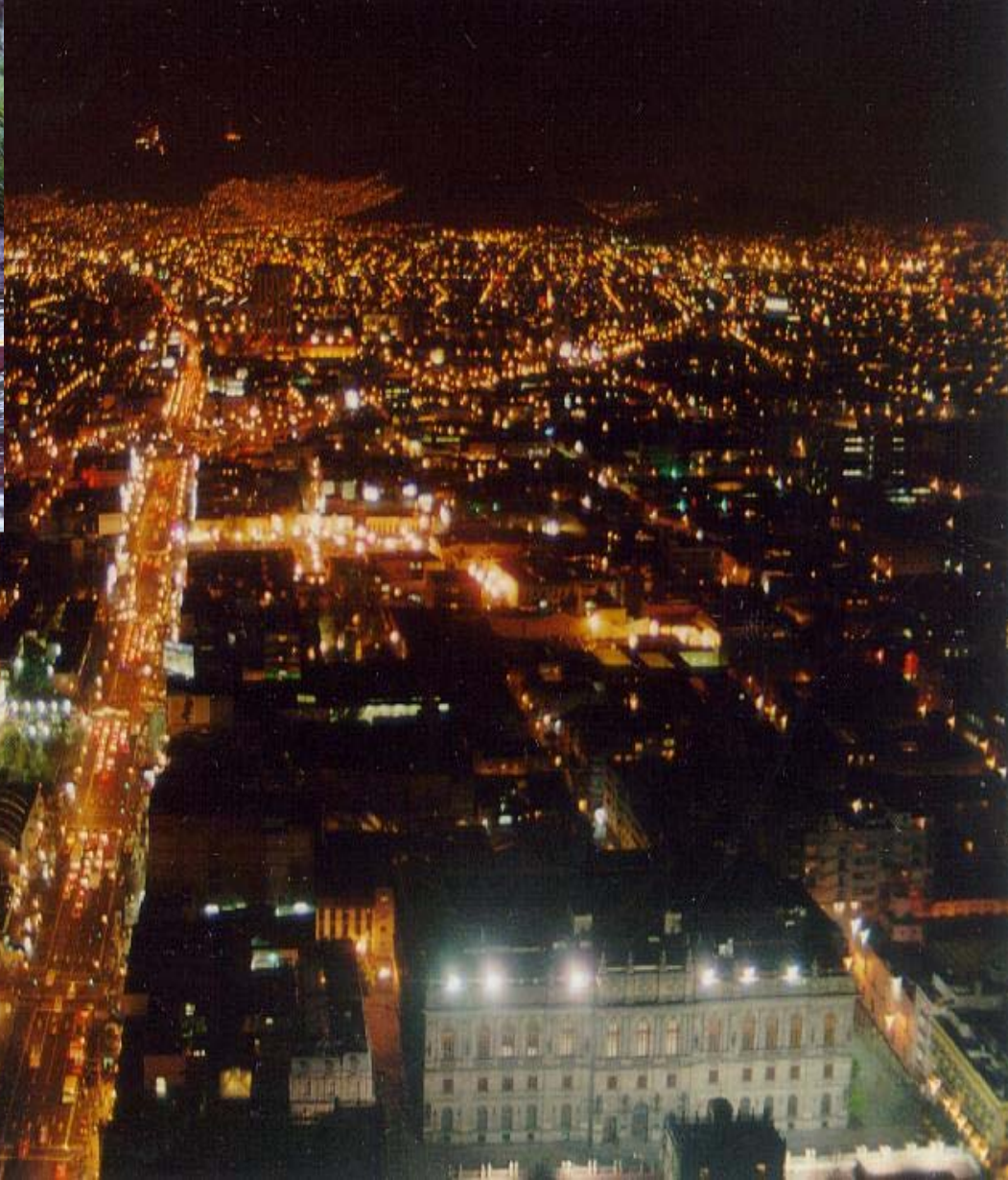


A woman wearing a wide-brimmed straw hat with an orange ribbon and a purple patterned blouse is seated in a yellow boat on a canal. She is leaning forward, tending to several baskets of colorful flowers (red, pink, and purple) on a white cloth. The boat is filled with flowers and has a white plastic bag on the right side. The background shows a lush green bank with tall grasses and trees, and a white cow is visible in the distance. The water is dark and reflects the surrounding greenery.

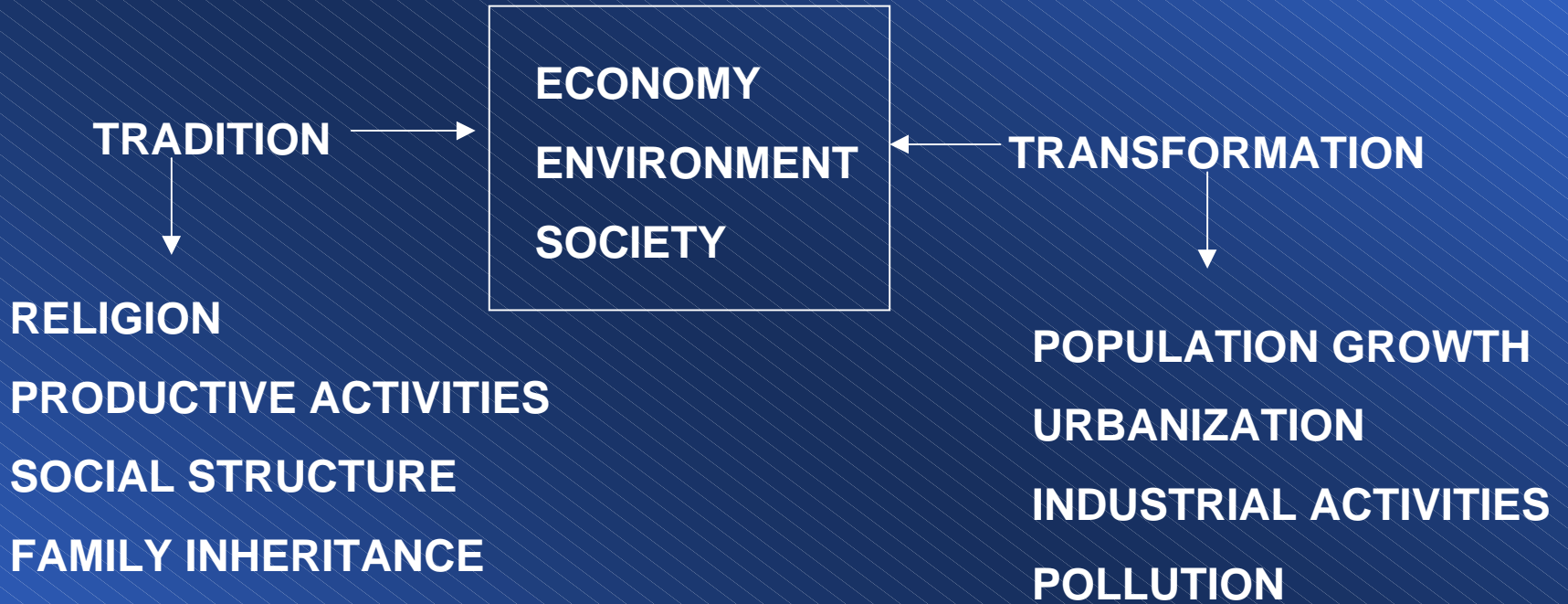
**TRADITION-TRANSFORMATION: XOCHIMILCO'S WOMEN**

**DR. IRMA ROSAS  
UNIVERSITY OF MEXICO  
([puma@servidor.unam.mx](mailto:puma@servidor.unam.mx))**

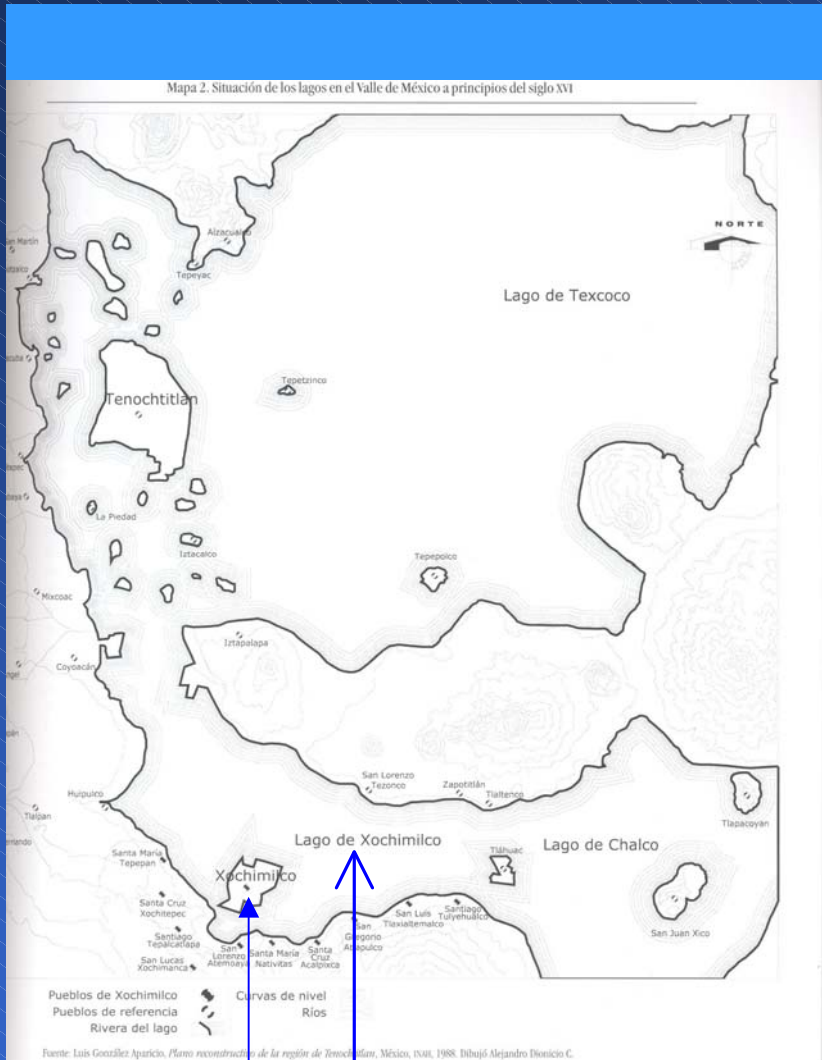




CONSERVATION: RURAL-URBAN ENVIRONMENTS



# A MEXICAN VILLAGE MANY YEARS AGO



SMALL POPULATION  
AGRICULTURE: CHINAMPA  
FISHERIES  
SPRING WATER  
SOIL FERTILITY

XOCHIMILCO

LAGO DE XOCHIMILCO

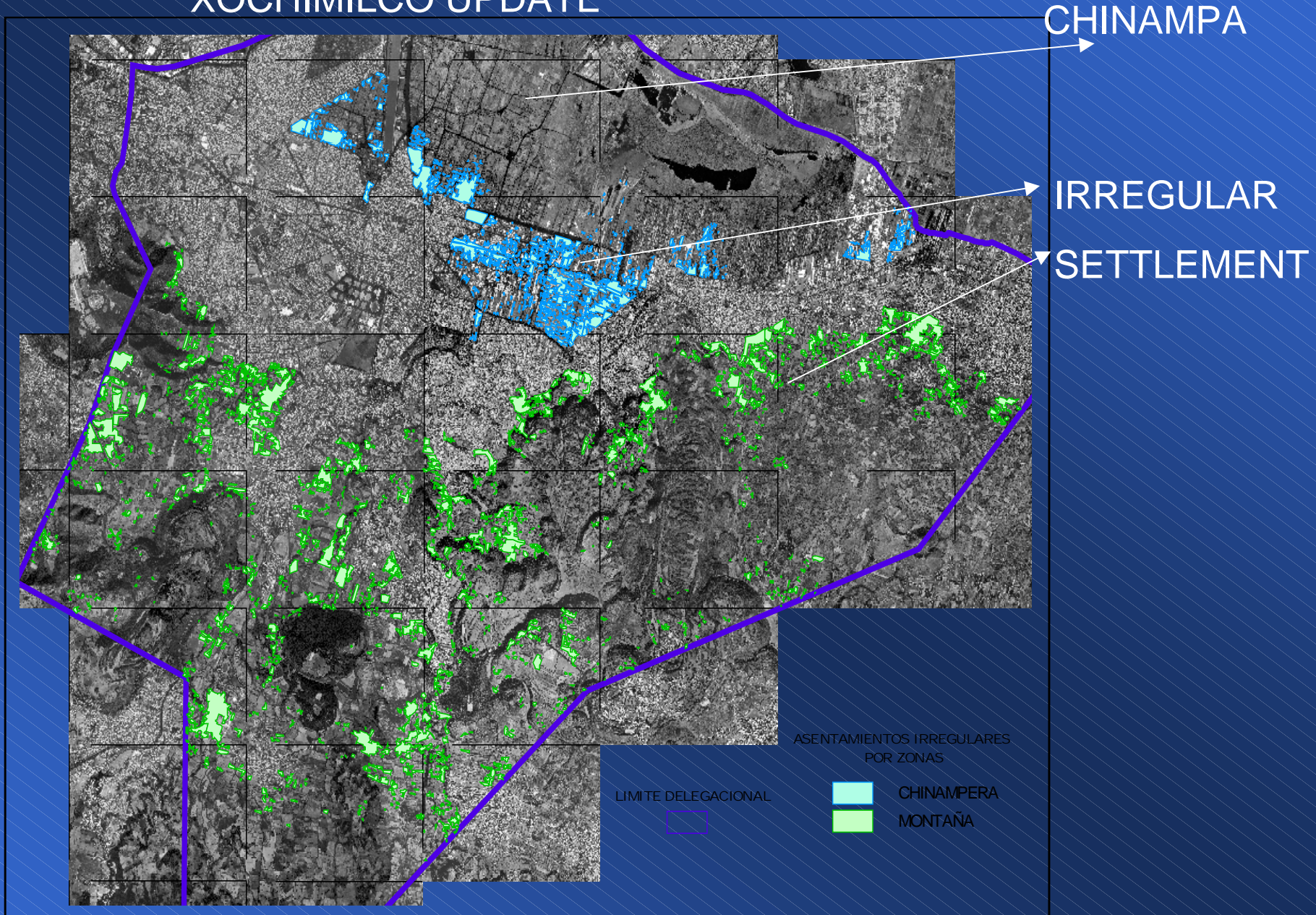


HISTORICAL EVENTS:  
PREHISPANIC  
SPANISH CONQUEST  
INDEPENDENCE  
PORFIRIATO  
REVOLUTION

XOCHIMILCO

DRAINING OF THE LAKE  
WATER POLLUTION  
URBANIZATION  
LOSS IN PRODUCTIVITY  
SPRING WATER  
CHANNELED INTO  
PIPES

# XOCHIMILCO UPDATE





# IRREGULAR SETTLEMENT



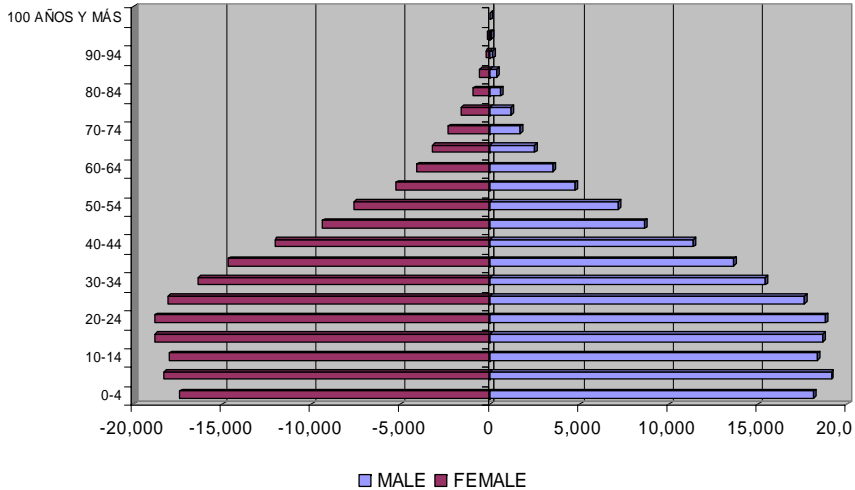
Waste water

Animal waste

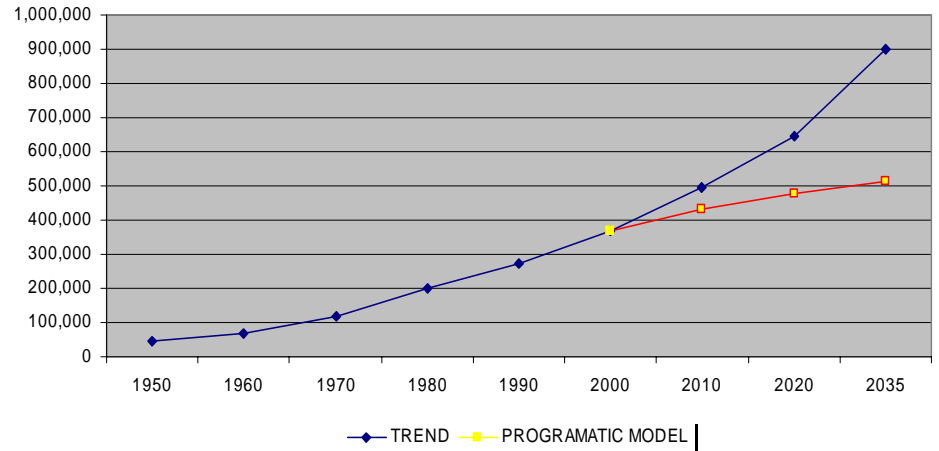


# POPULATION

POPULATION STRUCTURE IN XOCHIMILCO 2000



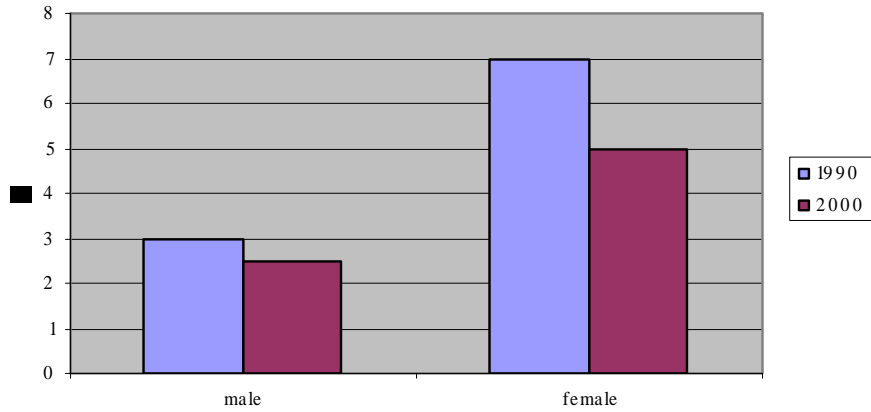
TREND AND MODELS OF XOCHIMILCO POPULATION



YEAR	POPULATION	ANNUAL GROWTH RATE POPULATION
1950	47,082	1940-1950
1960	70,381	1950-1960 (4.10)
1970	116,493	1960-1970 (5.17)
1980	197,819	1970-1980 (5.14)
1990	271,151	1980-1990 (3.22)
2000	369,787	1990-2000 (3.14)
2010	433,400	2000-2010 (1.60)
2020	478,785	2010-2020 (1.30)
2035	514,840	2020-2035 (0.95)

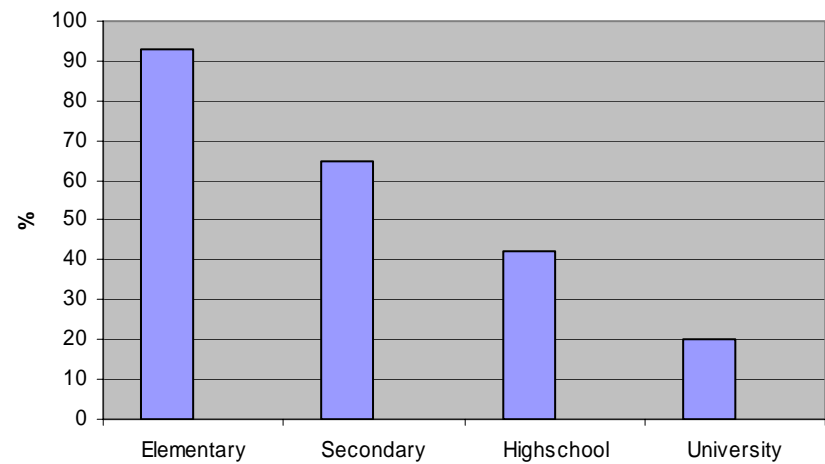


### Illiteracy rate in Xochimilco town

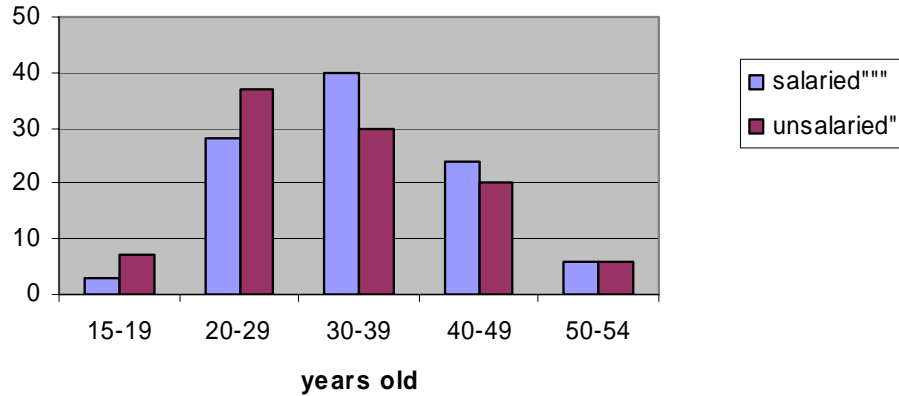


## EDUCATION LEVEL

### Education level of Xochimilco women

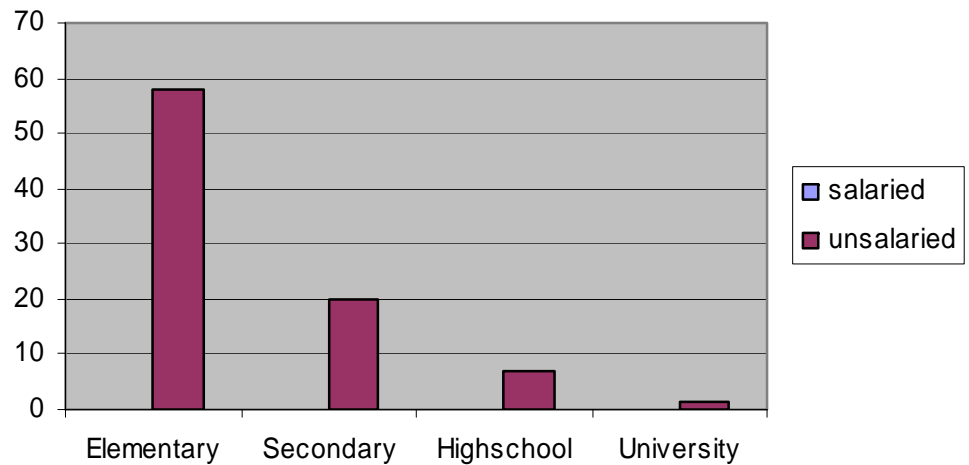


**Percent of housewives with and without external employment**



## EDUCATION LEVEL

**Education level among housewives in Xochimilco town**







# DEFENSE OF IDENTITIES



# MIXMANIC: GROUP OF FISHERS







## CAPACITY BUILDING

Gill net (size, weight)

## TRAINING





## Fisherwomen: primary productive force

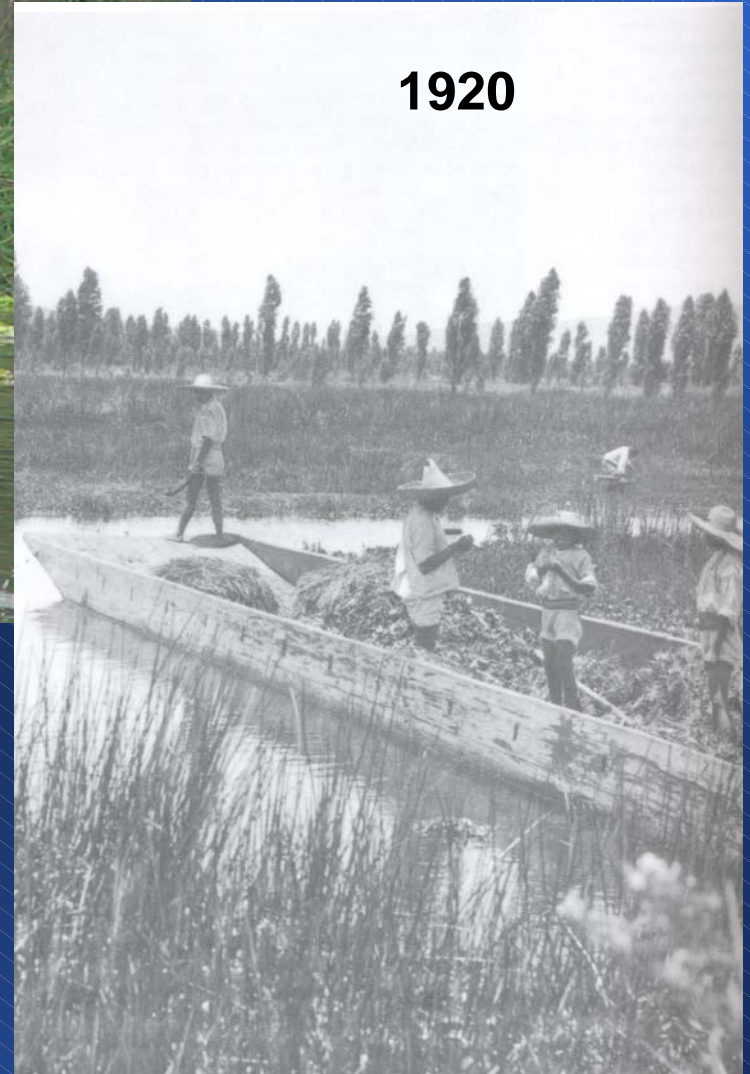




2005



1920



**TRADITION**





